



MODERN ELECTRIC COMPANY



PRODUCT PROFILE



- SWITCHGEARS | ●
- AUTOMATIONS | ●
- WIRES & CABLES | ●
- PANEL ACCESSORIES | ●



Email : modernelectric2013@gmail.com



DISTRIBUTORS AND DEALERS



CERTIFICATES



TEMPERATURE CONTROLLER



TIMERS & COUNTERS



PROCESS CONTROL INSTRUMENTS



POWER AND ENERGY METERS



PANEL METER



APFC & PROTECTION RELAYS



COLOR MARK SENSOR



JUMBO DISPLAY



600 Series

800 Series



Temperature Controller



Digital Timer



Panel Mounting Timers

Ammeter

PID Controller



PLC



AC Drives



SMPS



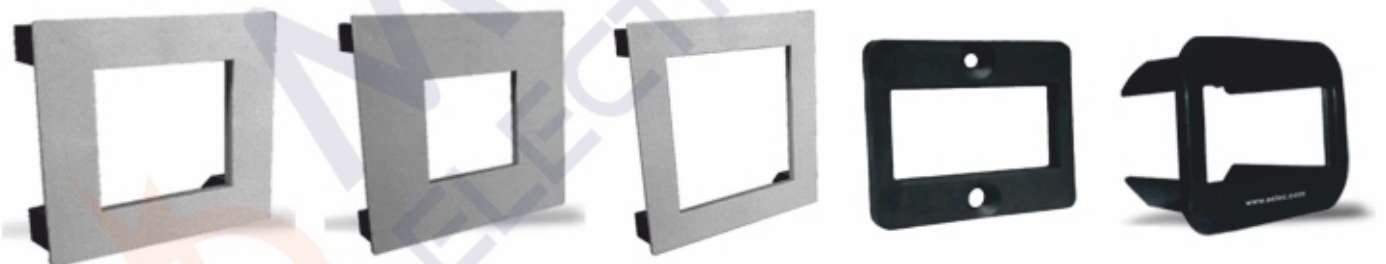
Convertors



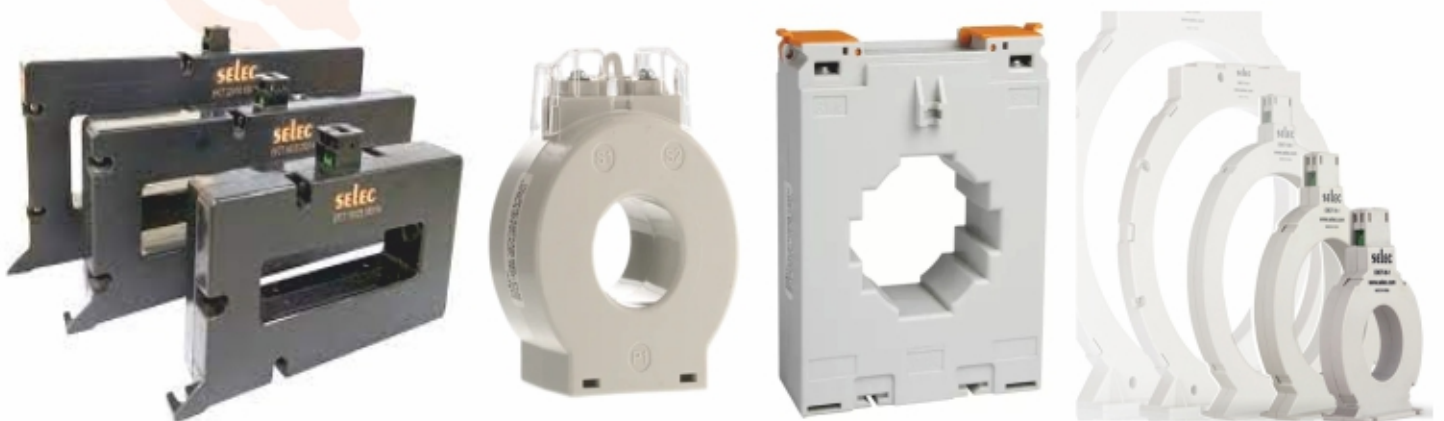
Earth Leakage Relay



Adapter Plate



CT Coils



Timers, Controllers & Counters

EAPL



APFC Relays & Timers

E/NTES



Controllers

Honeywell



sub-zero

dixell



Sensors, Controllers & Encoders

Autonics



Sensors & Encoders

PEPPERL+FUCHS

PROTECTING YOUR PROCESS



Sensors & Encoders

SICK

Sensor Intelligence.





Analog Meters & Shunts

ANALOG METERS

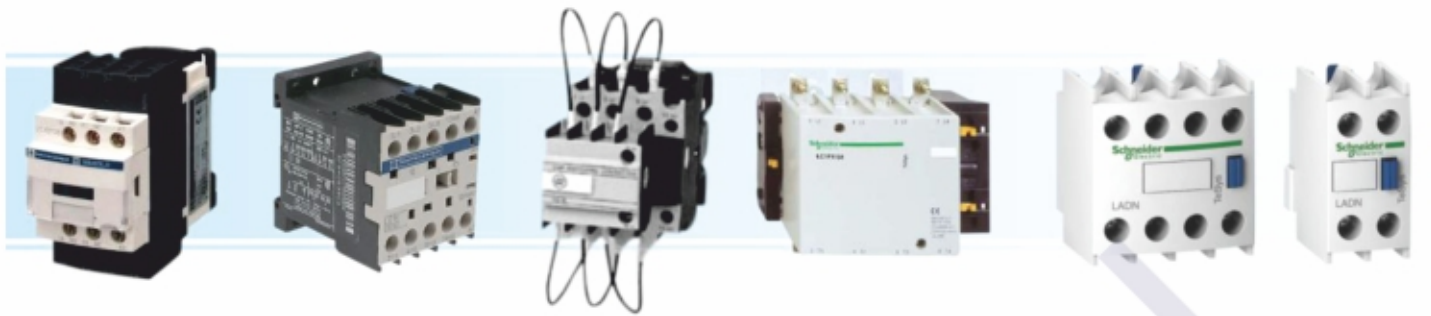


SHUNTS









3 Pole Contactor

Mini Contactor

Capacity Duty Contactor

4 Pole Contactor

Add on Block



Contact Timer

OLR

Mini OLR

Rotary MPCB

Switch MPCB

MCCB



1 Pole MCB

2 Pole ELCB

4 Pole ELCB

4 Pole MCB

Double Door MCB DB

Double Door MCB DB



Push Button

Illuminated Push Button

Indicator

Selector Switch

Key Selector Switch



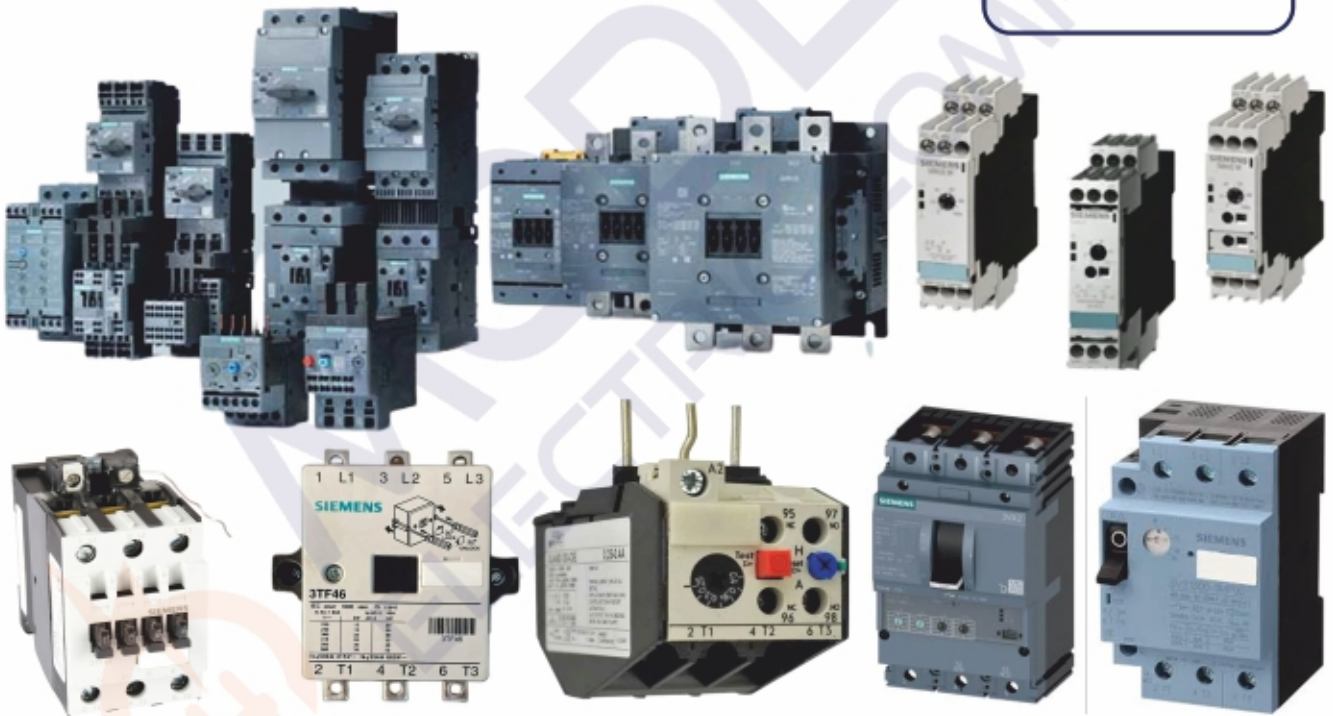
Emergency Stop

Twin Push Button

1 Way Metal Box

2 Way PVC Box

Joy Stick



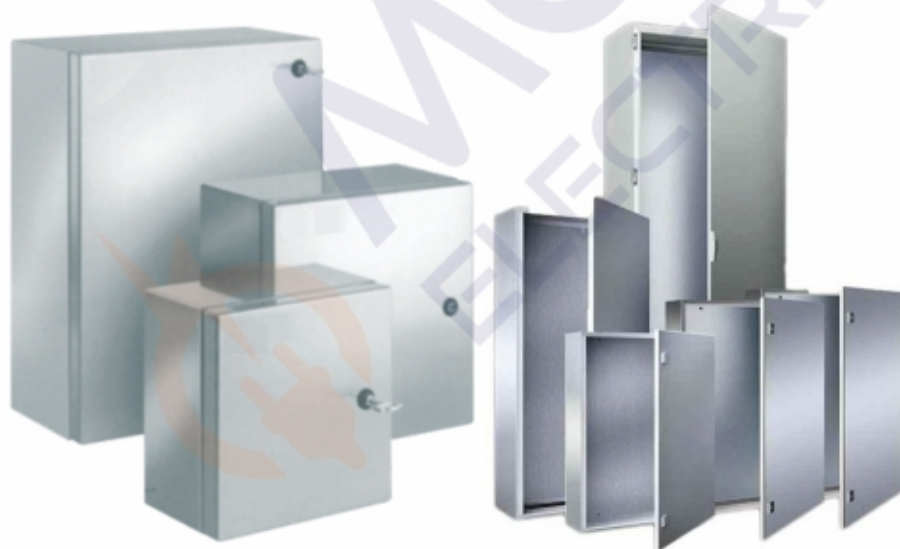
Limit & Safety Switches, Push Buttons(16mm, 22mm, 30mm)



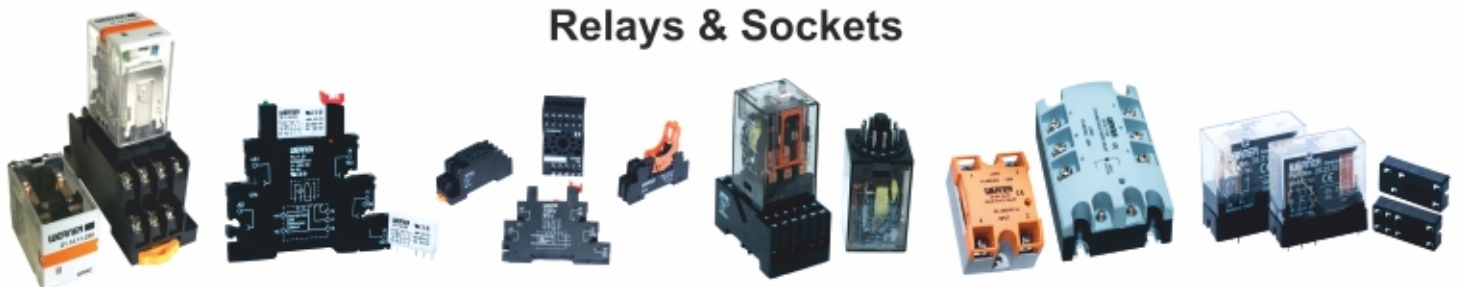


Panel Boards

Tower Lights



Relays & Sockets





Cylindrical Hooter

72x72 Electronic Hooter

96x96 Electronic Hooter

Electronic Hooter with Reset Button

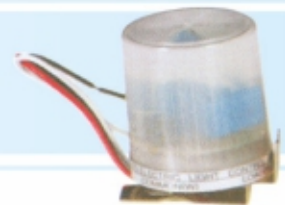


Industrial Buzzer

Portable Siren

Focus Siren

Focus Siren with Shield



Panel Top Indicator

Revolving Lights

Revolving Lamp with Hooter

Day & Night Sensor



Buzzer Cum Flashers



100i & Classic 110 & CY

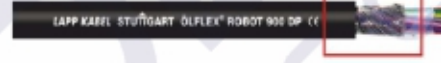


Shielded LiYCY



Infrastructure

Fire survival - Power, Control



INFRA ISI MARKED SINGLE CORE WIRES



ÖLFLEX® Crane Cable



**EIGHT BRANDS
UNCOMPROMISING QUALITY WORLDWIDE**

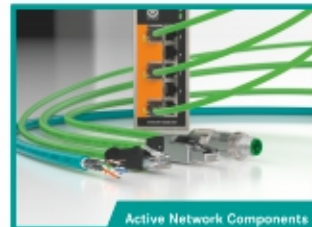
ÖLFLEX
Power and control cables



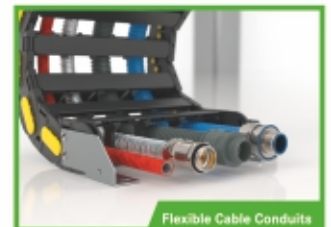
UNITRONIC®
Data communication systems



ETHERLINE®
Data communication systems for ETHERNET technology



SILVYN®
Protective cable conduit systems and cable carrier systems



EPIC®
Industrial connectors



SKINTOP®
Cable glands



HITRONIC®
Optical transmission systems



FLEXIMARK®
Marking systems





HEAT RESISTANT WIRE & HEATERS

FIBER GLASS WIRE



TEFLON WIRE



NICHROME WIRE



IR CERAMIC HEATER



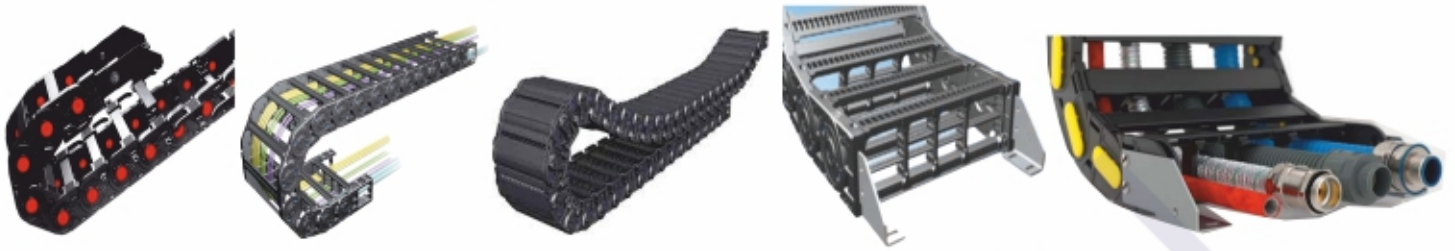
SOLAR PRODUCTS



Solar DC Cables for PV Modules



Cable Drag Chain



Galvanised Street Black Pipes



GI Flexible Split Flexible Pipe



Polyamide Glands



Mounting Clips



PVC Glands



Metal Glands



PVC Junction Box



CONNECTOR



Heavy Duty Multipole Industrial Connectors



H-A Series

H-B Series

H-BE & H-EE Series

H-BS & H-BVE Series



H-D & H-DD Series

Power H-S & TB Series

STA Series

H-Q Series

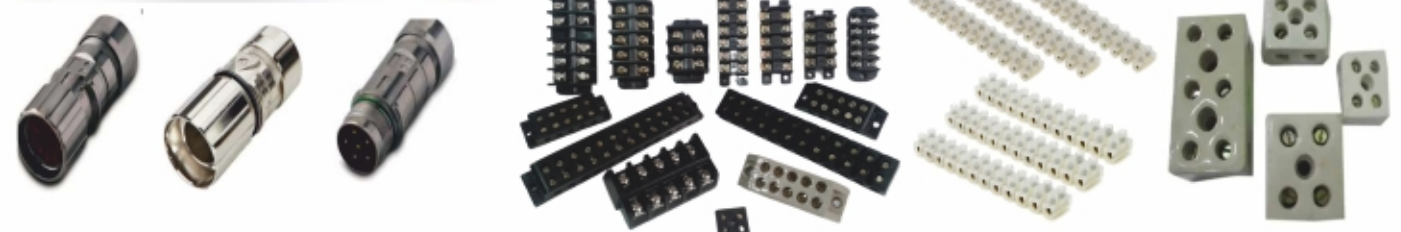


Plug & Socket

Round Shell 16mm & 25mm



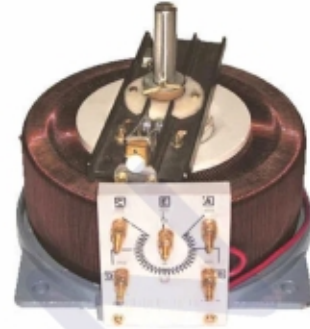
Strip Connectors (Bakelite, PVC & Porcelain)



Dimmerstat 1 Phase Close



Dimmerstat 1 Phase Open



Dimmerstat 3 Phase



Synchronous Motor



Current Transformer



Control Transformer



Instruments



Fluxe Prbo



Analog



2101



Temp. Gun



Max 62



Multimeter



Hygro Meter



Vibration Meter



Manometer



Anemometer



Lux Meter



PH



TDS



Sound Level



Techo Meter



Coating Thickness

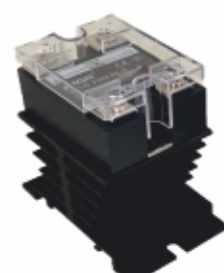
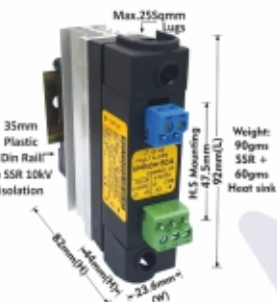


Meggar



Earth Tester With Kit







POWER SUPPLIES (DIN MOUNTED & BASE MOUNTED), LED DRIVERS



Battery Chargers





CTS2.5 SIZE UPTO CTS 35
Current Rating 24A-145A
0.5Upto 35Sq.mm



CSTS83
0.5 to 4 Sq.mm
Stud type Terminal Blocks



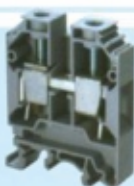
CSTSNa5
1.5 to 16 Sq.mm
Stud Type Terminal Blocks



CTS35L-95L
35-95Sq.mm 232A,1000V,10NM
Bus Bar Terminal Blocks



CDTTS
1.5 to 6 Sq.mm
Bus Bar Terminal Blocks



CTS2.5UN SIZE UPTO CTS 95U
Current Rating 24A-232A
0.5Upto 95Sq.mm



CSFL4U
Fuse Terminal Blocks



CSFL4UL
LED Fuse Terminal Blocks



CMC 2-2
0.25 TO 4 Sq.mm



CSTSN4U - CSTSN6U
1.5 - 35 Sq.mm
Feed Through Terminal Blocks



CSC2.5T-CSC16T
0.25 upto 16 Sq.mm
Spring Clamp Terminal Blocks



AS2.5-AS6 0.25 upto 6 Sq.mm
Angular Spring Clamp Terminal Blocks



AGT2.5
AngularGround/earth Terminal Blocks



CSCG2.5T-CSCG16T
0.25 upto 16 Sq.mm
Ground Earth Terminal Blocks



ASF4 Fuse Terminal Blocks



CDL4U
Double Level Terminal Blocks



CTL2.5U Triple Level Terminal Blocks



DDFL4U
Double Level Fuse Terminal Blocks



CDL4U(E)MOV
Surge Suppression Terminal Blocks



CGT4U - 35U
0.25 to 35 Sq.mm
Ground / Earth Terminal Blocks



CMT4
0.25 to 4 Sq.mm
Micro Terminal Blocks



CMB4
0.25 to 4 Sq.mm
Panel Mount Terminal Blocks



CMDB 6-25
1.5 - 25 Sq.mm
Distribution Blocks



CMDB4
0.25 - 4 Sq.mm
Distribution Blocks



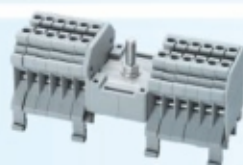
PTB35/50SH
Power Terminal Blocks



CDB6 1.5 - 6 Sq.mm
Distribution Blocks



CDB25 6 - 25 Sq.mm
Distribution Blocks



CDB4 0.25 - 4 Sq.mm
Distribution Blocks



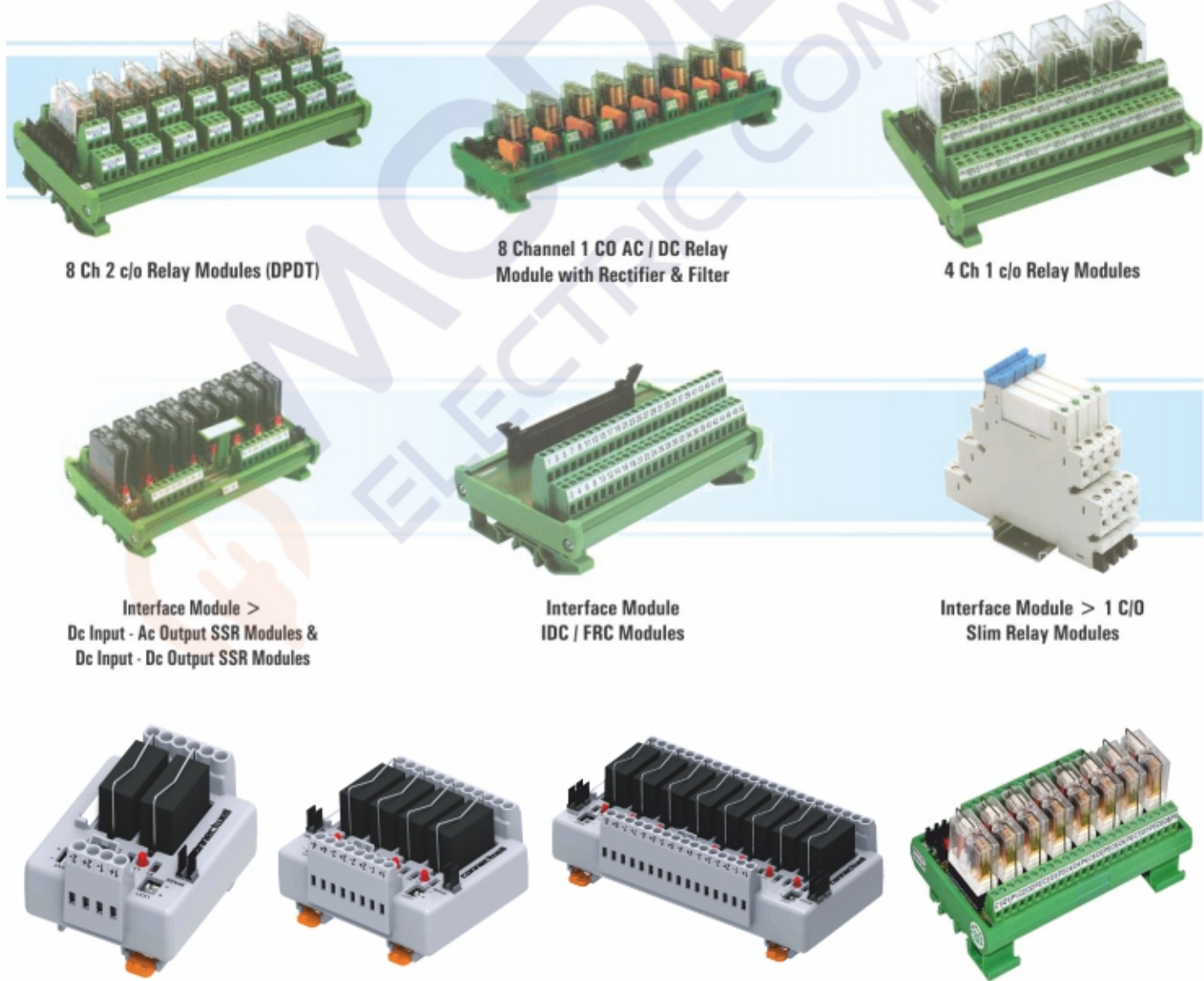
DB16 2.5 to 16 Sq.mm
76A



DB35
Input : 6-35sq.mm
Output : 2.5-10sq.mm



Relay / Interface / SSR Modules



RAILWAY CONNECTORS



BACKSHELLS AND ACCESSORIES



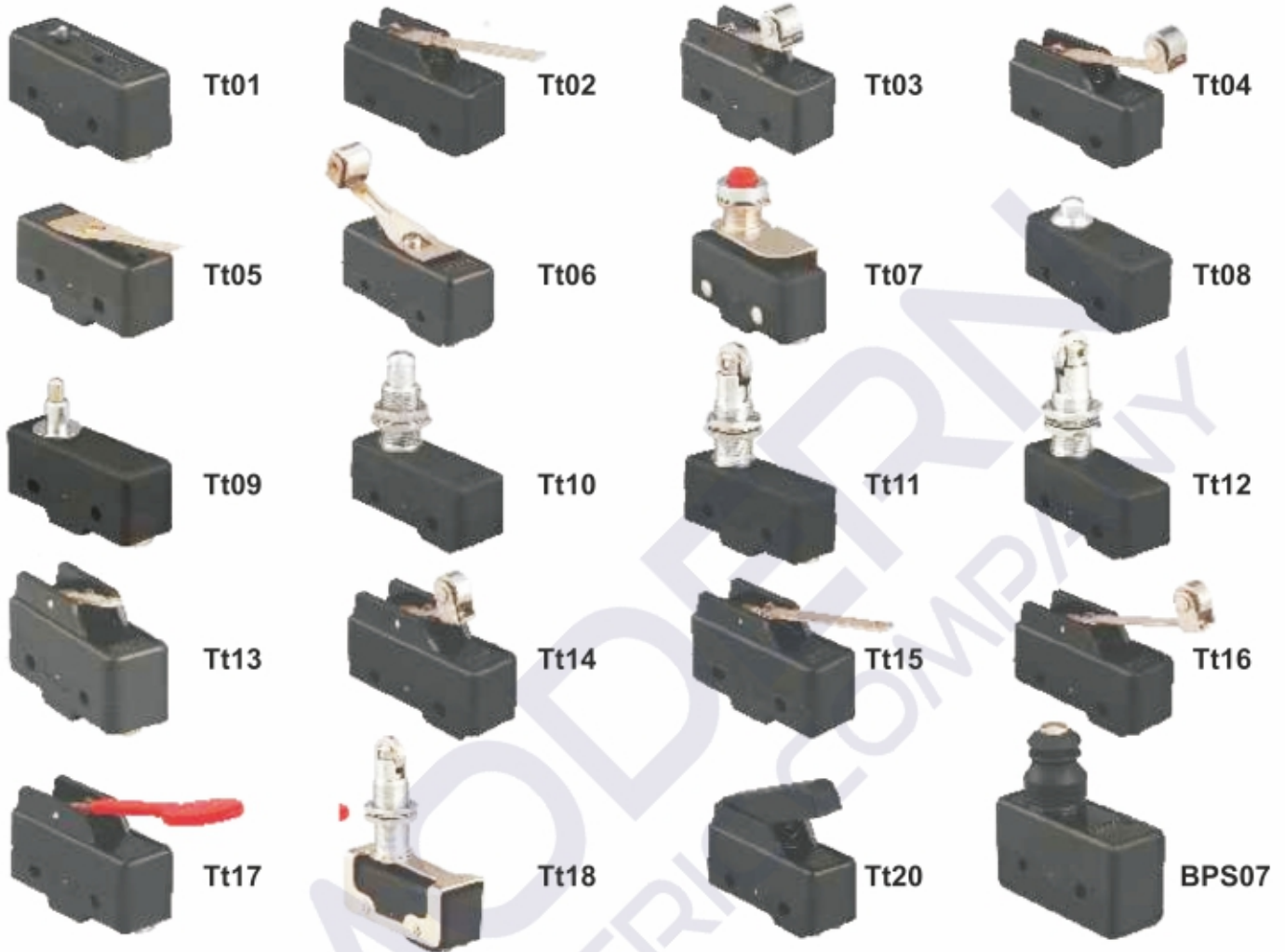
CONNECTOR SERIES



Fan's & Blowers



Micro Switches



Micro / Limit Switches



Limit Switches



Limit Switches



BLS 01



BLS 02



BLS 05



BLS 06



BLS 07



BLS 08



BLS 09



BLS 10



BLS 12



BLS 14



8104



8108



8111



8122



8107



8167



101



111



8166



121



133



191



BFS 01



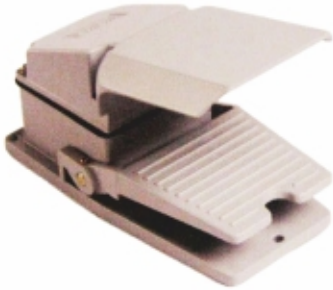
BFS 03



BFS 05



BFS 09



BFS 10



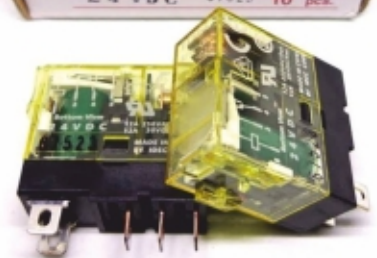
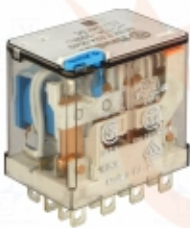
BFS 12



BFS 01 TH



Relays & Sockets





16A 3Pin Plug
IP 67



16A 3Pin Bend Plug
IP 44



32A 5Pin Plug
IP 67



32A 5Pin Plug
IP 44



Schuko Type Plug



32A 5Pin Socket
IP 67



16A 5Pin Socket Straight
IP 44



32A 5Pin Socket Angled
IP 44



32A 5Pin Socket Box Type
IP 67



Schuko Type Socket



32A 5Pin GT Connector
IP 67



16A 5Pin GT Connector
IP 44



Schuko GT Connector



16A 4 Pin GT Connector



Appliance Inlet



Plug & Socket
With Enclosure 20 - 63 A



Plug & Socket
With Plastic Enclosure



Switch Socket
Interlocked



Switch Socket
Interlock IP 67



Weather Proof MCB
Enclosure



Custom Made Power Distribution Board

PVC Power Distribution Board



Float Switches (SS & PVC)



Tailor Made Thermocouples, Plug & Socket



Panel Lock, Key & Hinges



Rotary / Cam Switches



Solenoid Plugs



Solenoid Coil



Pressure Transmitters & Liquid Level Sensors



Hour Meters & Counters



Pendant Stations & Remote



Crimping Tools (Mechanical & Hydraulic)



Cable Connectors & Lugs



Bus Bar Insulator



Cable Gland



Sirens & Flashers





Industrial Maintenance Electrical Products



CRC 2-26



CRC Leakfinder



CRC White Lithium Grease



CRC Dry Lube



CRC Silicone



CRC Rost Flash
Rust Loosener With Freeze Shock Effect.



CRC 3-36



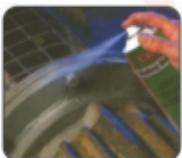
CRC SP-40



CRC Galva Brite



CRC Zinc



CRC Galva Brite



CRC Contact Cleaner
Solvent Cleaner For Light Contaminants
On Electric Or Electronic Parts. Compatible
With Most Plastics



CRC Cleaners



CRC Lectra Clean



Teflon & Fibre Glass Cables



High Temperature Cable



Heat Shrink Tubes



Fibre Glass Sleeve



Silicone Rubber Sleeve



Heat Shrink Tubes Colours



Heat Shrink Tubes



Teflon & Fibre Glass Cables
Multicores



PLC BATTERY

Duracell Battery



AC Drives & PLC



DC Contactor & Battery Connector



Preventor Relays, Timers, Gear Motors, Speed Controller, Solenoid Pulls



Miniature Switches, Buttons & Indicators



Potentiometers, Reed Switches, Magnetic Switches & Sensors



PHILIPS

Crompton

HAVELLS

OSRAM



Flame Proof Fittings



Preventors, Controllers & Annunciators

minilec[®]



Wall Mount, Pedestrial & Exhaust Fans



Pedestral Fan



Wall Mounting Fan



Wall Mounting Fan



Axial Flow Fan



Exhaust Fan

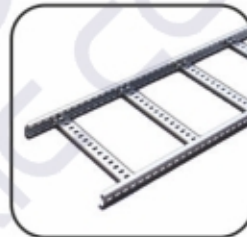
PVC Channels, GI Raceways & Ladders



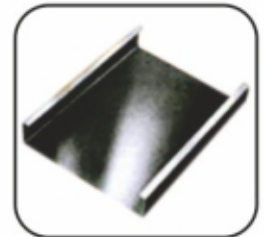
PVC Channel



GI Channel Lader Type 1.6 mm



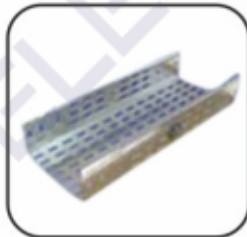
GI Channel Lader Type 2.1 mm



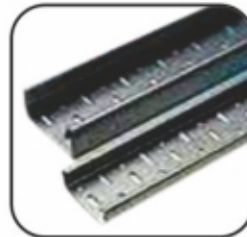
GI Channel Closed Type



PVC Channel Fully Closed



GI Channel Cover



GI Channel Preforated Type

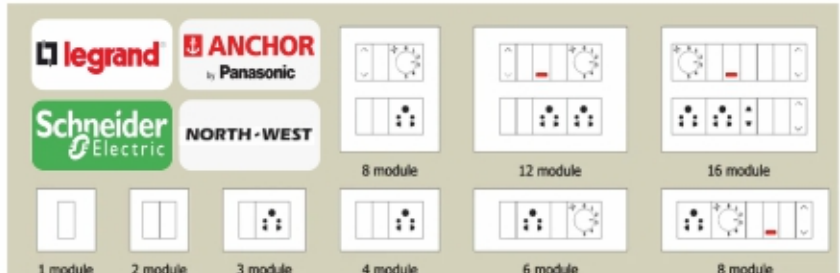


GI Channel Angle Type

Soldering Iron



Domestic Switch-Socket





DC Drives



Flp Boxes And Fittings



Cable Ties, Spiral, PVC Sleeves, Ferrule Printing Sleeves



ELECTRICAL DATA

WEIGHT OF COPPER FLATS IN KILOGRAMS PER METER

SIZE		WT.IN	CURRENT CAPACITY AMPS	SIZE		WT.IN	CURRENT CAPACITY AMPS
W	T	KG/MTR.		W	T	KG/MTR.	
1/2"	X 1/8"	0.360	62	1 1/2"	X 1/8"	1.080	180
1/2"	X 1/4"	0.720	125	1 1/2"	X 1/4"	2.160	375
3/4"	X 1/8"	0.540	90	2"	X 1/4"	2.880	500
3/4"	X 1/8"	1.080	180	2"	X 1/2"	5.760	1000
1"	X 1/16"	0.360	62	2 1/2"	X 1/4"	3.600	625
1"	X 1/8"	0.720	125	2 1/2"	X 1/2"	7.200	1250
1"	X 1/4"	1.440	250	3"	X 1/4"	4.320	750
1"	X 1/2"	2.880	500	3"	X 1/2"	8.640	1500
1 1/4"	X 1/8"	0.900	155	4"	X 1/4"	5.760	1000
1 1/4"	X 1/4"	1.800	310	4"	X 1/2"	11.520	2000

WEIGHT OF COPPER WIRE FLEXIBLE CABLE

Imperial wire Gauge (S.W.G)	Standard	Diameter	Sectional Area	Weight	SIZE	Mm2	Amps
7/0		12.70	126.6	113.1	16/.20	0.50	4
6/0		11.78	109.1	97.6			
5/0		10.97	94.5	85.0	24/.20	0.75	7
4/0		10.16	81.0	72.6			
3/0		9.45	70.1	62.5	32/.20	1.00	11
2/0		8.84	61.4	54.8			
0		8.23	53.1	47.7	48/.20	1.50	14
1		7.62	45.6	40.8			
2		7.01	38.6	34.7	80/.20	2.50	19
3		6.40	32.2	28.8			
4		5.89	27.3	24.4	128/.20	4.00	26
5		5.38	22.7	20.4			
6		4.87	18.7	16.6	84/.20	6.00	33
7		4.46	15.7	14.0			
8		4.07	12.9	11.6	140/.30	10.00	45
9		3.66	10.5	9.4			
10		3.25	8.3	7.5	101/0.45	16.00	60
11		2.95	6.84	6.11			
12		2.64	5.48	4.92	157/0.45	25.00	75
13		2.34	5.48	4.92			
14		2.03	3.22	2.96	220/0.45	35.00	95
15		1.83	3.64	2.30			
16		1.62	2.06	1.85	314/0.45	50.00	125
17		1.42	1.61	1.42			
18		1.22	1.16	1.04	354/0.50	70.00	170
19		1.01	0.839	0.726			
20		0.914	0.645	0.589	484/0.50	95	210
21		0.812	0.516	0.465			
22		0.716	0.387	0.354	614/0.50	120	235
23		0.609	0.258	0.261			
24		0.558	0.239	0.221	750/0.50	150	295
25		0.508	0.2	0.182			
26		0.457	0.161	0.146	925/0.50	185	330
					1221/0.50	240	400
					1521/0.50	300	475
					2036/0.50	400	500

Busbar Sizes

SwitchBoard RatingAmps	BusbarSize (Aluminium)mm	
	Phase	Neutral
100	25x6	25x6
200	38x6	38x6
300	63x6	38x6
400	2x38x6	38x6
500	2x50x6	50x6
600	2x63x6	63x6
800	2x50x9	50x9
	2x75x6	75x6
1000	2x75x9	75x9
	3x50x9	2x50x6
1200	125x12	100x9
	2x75x12	1x75x12
1600	2x100x9	1x100x9
	3x75x12	2x75x9
2000	2x100x12	1x100x12
2500	2x125x12	1x125x12
	3x100x12	2x125x12
3200	3x100x12	2x100x9
	2x152x12	1x152x12
400	4x125x12	2x125x12

CURRENT RATING

FOR ALUMINIUM CONDUCTOR CABLES SUBJECT TO VOLTAGE DROP

Vulcanised Rubber P.V.C. or Polythene

Insulated cables sheathed with Rubber, P.V.C. lead

tough TWIN,

3-CORE AND 4-CORE

CONDITONS OF INSTALLATION One cable in run in conduit, troughing or carring or in free air or open trench
Ambient temperature : 30 C (86 F)

size of conductor		One twin-core cable d.c. or single-phase a.c.		one 3-core or 4-core c cable balanced three phase		
Normal Area	Number and diameter of wire	current rating	Approximate length of run for 1-volt drop-d.c.	current rating	Approximate length of run for 1-volt drop	
mm2	mm	amp	meters	amp	meters	
1.5	1/1.40	10	2.3	2.3	7	3.7
2.5	1/1.80	15	2.5	2.5	11	3.9
4	1/2.24	20	2.9	2.9	14	4.8
6	1/2.80	27	3.4	3.4	19	5.5
10	1/3.55	34	4.2	4.2	24	6.8
16	7/1.70	43	5.3	5.3	30	8.7
25	7/2.24	59	6.6	6.6	42	10.8
35	7/2.50	69	7.1	7.1	48	11.7
50*	7/3.00	91	7.7	7.7	62	13.1
	19/1.80					
70	19/2.24	118	9.0	8.8	82	14.7
95	19/2.50	135	9.8	9.5	94	15.7
120	37/2.06	162	10.8	10.3	114	16.8
150	37/2.24	181	11.4	10.7	127	17.5
185	37/2.50	209	12.3	11.2	146	18.4
225	37/2.80	240	13.5	11.7	169	19.1
240	37/3.00	263	14.0	11.9	185	19.5
300	61/2.50	2898	14.6	12.1	202	20

POWER CAPACITOR FOR DIRECT CONNECTOR INDUCTION MOTORS

CAPACITOR KVAR AT MOTOR SPEED OF

Meter HP	3000 rpm	1500 rpm	1000 rpm	750 rpm	600 rpm	500 rpm
5	2	2	2	3	3	3
7.5	2	2	3	3	3	3
10	3	3	4	5	5	5
15	3	4	5	7	7	7
20	5	6	7	8	8	10
25	6	7	8	9	9	12
30	7	8	9	10	10	15
40	9	10	12	15	16	20
50	10	12	15	18	20	22
60	12	14	15	20	25	25
75	15	16	20	22	25	30
100	20	22	25	26	32	35
125	25	26	30	32	35	40
150	30	32	35	40	45	50
200	40	45	45	50	55	60
250	45	50	55	60	65	70

A GENERAL IDEA ABOUT THE POWER

CONSUMPTION OF HOME APPLIANCES

Table Fan	- 40W
Ceiling Fan	- 60W
Electric Iron	- 400W to 750W
Imersion Heater	- 250W to 1000W
Coil Stove	- 1250W to 2000W
Refrigerator	- 90W (165 Ltr. Fridge consume 1 unit per day average)
500 VA stabilizer for	- 4 to 6 W Refrigerator
Washing Machine	- 200 W to 350 W (without heater)
Washing Machine	- 1500 W to 200 W (with heater)
Grinder / Mixie	- 350 W to 500W
Window type A/c	- 1500 to 300 W
Stabilizer for Air Conditioner	- 20 to 40 W
Water Heater	- 1500 to 2000 W
Televisions Sets	- 60 to 90 W
Video Cassette recorder	- 70 to 120 W

Out of above items like electric Iron, auto coil Stove, Water heater, Refrigerator, Air Conditioners having Thermostat controls consumptions is only according to its usage.



MODERN ELECTRIC COMPANY

7-3-688, Dundoo Building, Beside Karnataka Bank Opp. City Light Hotel,
R.P. Road, Secunderabad - 500 003. Phone : 040-66385380, 66385381
Email : modernelectric2013@gmail.com